

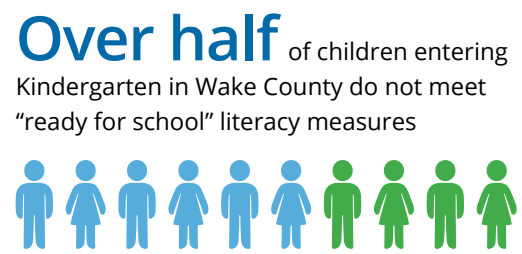
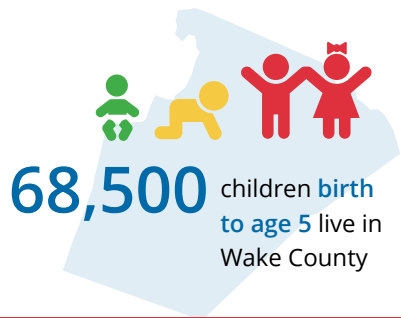


FACT SHEET

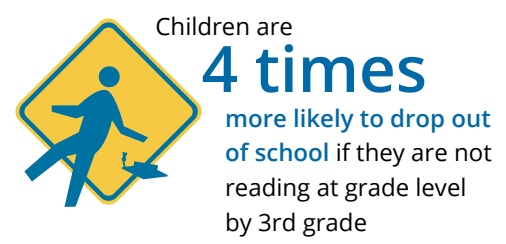
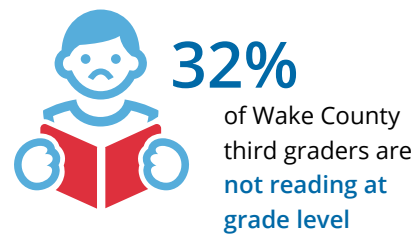
Every Child. Each Community. Ready for School and Life.



How we prepare young children for Kindergarten impacts their future.



When children start behind, they often stay behind.



WCSS invests in programs that help children start Kindergarten ready to learn.

We focus on the essentials needed for a strong foundation in life:

Good Health

By improving access to screening and referrals at **30** pediatric practices, reaching **10,000** Medicaid eligible children.

Strong Families

By connecting families to needed resources through Wake Connections—an online referral system used by **56** programs to efficiently coordinate services.

HIGH QUALITY Learning Experiences

By ensuring Kindergarten success that lasts—**95%** of Wake County's Pre-K graduates meet "ready for school" measures.

WCSS also works to improve our early childhood system of care and education. Visit our website at www.wakesmartstart.org to learn about all of our programs and how we support young children and their success in school and life.

Thank you to our Investment Champions:



Program name | Managing agency

Supporting Families: \$1,490,907

- [Language is the Key](#) | Catholic Charities | \$74,943
- [Nurse-Family Partnership](#) | Wake County Human Services | \$82,500
- [Parents as Teachers](#) | Office of Early Learning, Wake County Public School System | \$572,810
- [Social/Emotional Interventions for Young Children \(SecurePath\)](#) | Lucy Daniels Center for Early Childhood | \$371,810
- [The Nuturing Program for Spanish Speaking Families \(Crianza Con Carino\)](#) | SAFEchild | \$84,015
- [Triple P Positive Parenting](#) | Office of Early Learning, Wake County Public School System | \$100,000
- [Wake Connections](#) | Funded by John Rex Endowment, managed by WCSS | \$204,829

Improving Child Care Quality: \$7,181,660

- [Advancing School Readiness](#) | Child Care Services Association | \$158,637
- [Child Care Health Consultant Program](#) | Wake County Human Services | \$460,986
- [Child Care Program Quality Supplements](#) | WCSS | \$1,036,705
- [Child Care Subsidy Program](#) | Wake County Human Services | \$4,968,810
- [Improving and Sustaining Quality Child Care](#) | WCSS | \$262,136

Healthy Initiatives: \$294,386

- [Shape NC: Healthy Starts for Young Children, an initiative of Smart Start and BCBSNC Foundation](#) | Funded by the Corporation for National and Community Service, Social Innovation Fund, managed by WCSS | \$177,193
- [Farm to Child Care](#) | Funded by John Rex Endowment, managed by WCSS | \$177,193

Encouraging Healthy Development and School Readiness: \$15,200,066

- [Assuring Better Child Health & Development](#) | Community Care of Wake and Johnston Counties | \$45,431
- [Dolly Parton's Imagination Library](#) | WCSS | \$15,000
- [Home Instruction for Parents of Preschool Youngsters](#) | The Family Resource Center South Atlantic | \$262,536
- [NC Pre-Kindergarten](#) | WCSS | \$14,791,220
- [Reach Out and Read](#) | WCSS | \$20,000
- [School Readiness Services for Hispanic Children & Families](#) | Catholic Charities | \$65,879

Strengthening the Early Childhood System of Care and Education: \$497,314

- [Strategic Engagement Initiatives](#) | WCSS | \$497,314

JOIN US:



Fact sheet sources: Annie E. Casey Foundation, NC State Demographer, NC Department of Child Development and Early Education, NC Partnership for Children, Wake County Public School System, Wake County Smart Start.

Wake County Smart Start | 4901 Waters Edge Drive | Suite 101 | Raleigh, NC 27606 | 919.851.9550